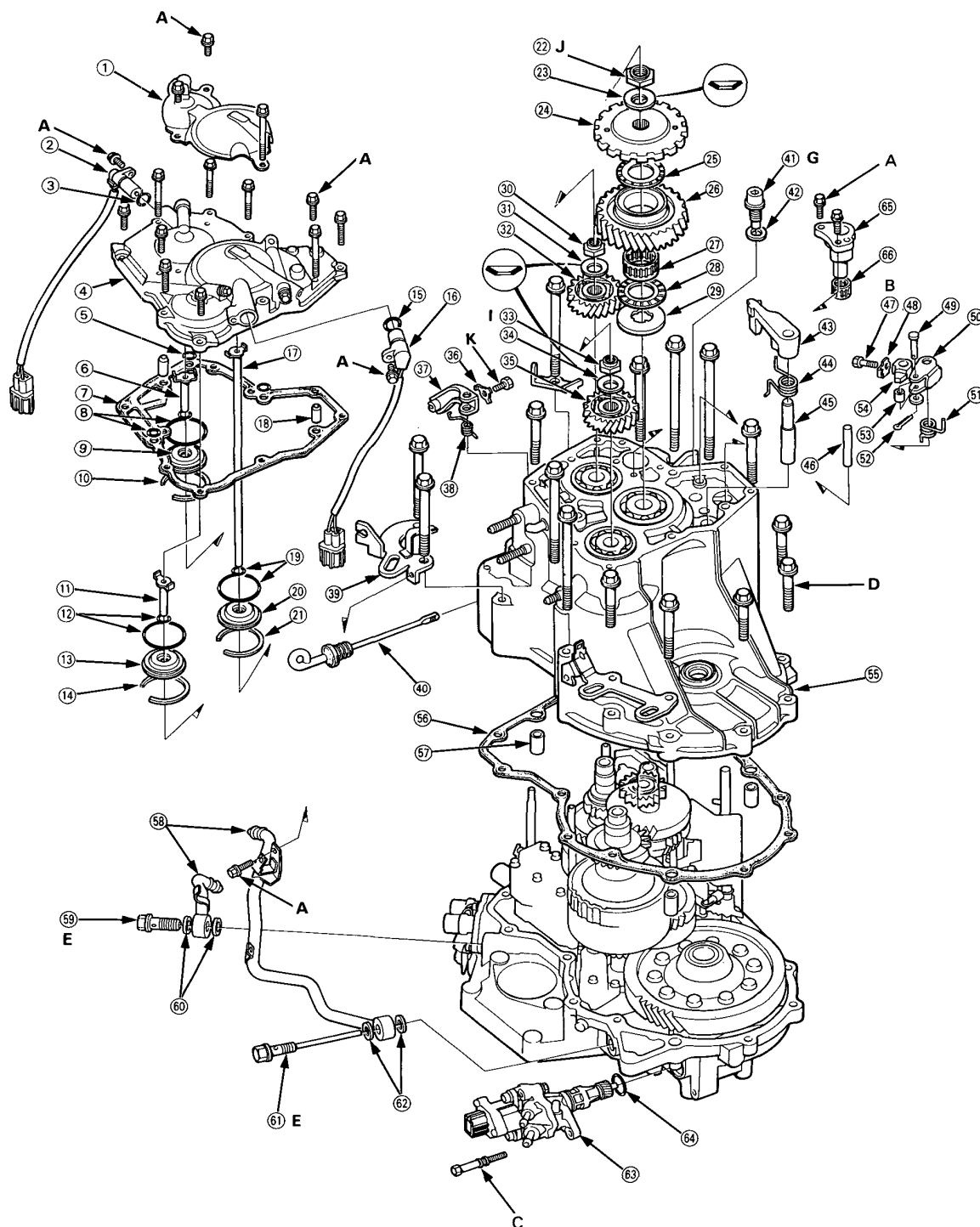


# Illustrated Index

## R. Side Cover





- ① R.SIDE COVER PROTECTOR
- ② NM SPEED SENSOR
- ③ O-RING Replace.
- ④ R.SIDE COVER
- ⑤ O-RING Replace.
- ⑥ 4TH CLUTCH FEED PIPE
- ⑦ R.SIDE COVER GASKET Replace.
- ⑧ O-RINGS Replace.
- ⑨ FEED PIPE GUIDE
- ⑩ SNAP RING
- ⑪ 1ST CLUTCH FEED PIPE
- ⑫ O-RINGS Replace.
- ⑬ FEED PIPE GUIDE
- ⑭ SNAP RING
- ⑮ O-RING Replace.
- ⑯ NC SPEED SENSOR
- ⑰ 1ST-HOLD CLUTCH FEED PIPE
- ⑱ DOWEL PIN
- ⑲ O-RINGS Replace.
- ⑳ FEED PIPE GUIDE
- ㉑ SNAP RING
- ㉒ COUNTERSHAFT LOCKNUT, 24 × 1.25 mm  
(Flange nut) Replace.
- ㉓ CONICAL SPRING WASHER Replace.
- ㉔ PARKING GEAR
- ㉕ THRUST NEEDLE BEARING
- ㉖ COUNTERSHAFT IDLER GEAR
- ㉗ NEEDLE BEARING
- ㉘ THRUST NEEDLE BEARING
- ㉙ THRUST WASHER
- ㉚ MAINSHAFT LOCKNUT, 24 × 1.25 mm  
(Flange nut) Replace.
- NOTE: Left-hand threads
- ㉛ CONICAL SPRING WASHER Replace.
- ㉜ MAINSHAFT IDLER GEAR
- ㉝ SECONDARY SHAFT LOCKNUT, 24 × 1.25 mm  
(Flange nut) Replace.
- ㉞ CONICAL SPRING WASHER Replace.
- ㉟ SECONDARY SHAFT IDLER GEAR
- ㊱ LOCK WASHER Replace.
- ㊲ THROTTLE CONTROL LEVER
- ㊳ THROTTLE CONTROL LEVER SPRING
- ㊴ TRANSMISSION HANGER
- ㊵ ATF LEVEL GAUGE
- ㊶ DRAIN PLUG
- ㊷ SEALING WASHER Replace.
- ㊸ PARKING BRAKE PAWL
- ㊹ PARKING BRAKE PAWL SPRING
- ㊺ PARKING BRAKE PAWL STOPPER
- ㊻ PARKING BRAKE PAWL SHAFT
- ㊼ LOCK BOLT
- ㊽ LOCK WASHER Replace.
- ㊾ ROLLER PIN
- ㊿ PARKING BRAKE LEVER
- ㉑ PARKING BRAKE SPRING
- ㉒ COTTER PIN Replace.
- ㉓ PARKING BRAKE ROLLER
- ㉔ PARKING BRAKE STOPPER
- ㉕ TRANSMISSION HOUSING
- ㉖ TRANSMISSION HOUSING GASKET Replace.
- ㉗ DOWEL PIN
- ㉘ ATF COLLER PIPES
- ㉙ JOINT BOLT
- ㉚ SEALING WASHERS Replace.
- ㉛ JOINT BOLT
- ㉜ SEALING WASHERS Replace.
- ㉝ SPEED SENSOR
- ㉞ O-RING Replace.
- ㉟ REVERSE IDLER GEAR SHAFT HOLDER
- ㊱ NEEDLE BEARING

## TORQUE SPECIFICATIONS

Ref No.	Torque Value	Bolt Size	Remarks
A	12 N·m (1.2 kg-m, 9 lb-ft)	6 × 1.0 mm	
B	14 N·m (1.4 kg-m, 10 lb-ft)	6 × 1.0 mm	
C	18 N·m (1.8 kg-m, 13 lb-ft)	8 × 1.25 mm	
D	55 N·m (5.5 kg-m, 40 lb-ft)	10 × 1.25 mm	
E	29 N·m (2.9 kg-m, 21 lb-ft)	12 × 1.25 mm	Joint Bolt
G	50 N·m (5.0 kg-m, 36 lb-ft)	18 × 1.5 mm	Drain Plug
H	230 → 0 → 170 N·m (23.0 → 0 → 17.0 kg-m, 166 → 0 → 123 lb-ft)	24 × 1.25 mm	Mainshaft Locknut
I	230 → 0 → 170 N·mm (23.0 → 0 → 17.0 kg-m, 166 → 0 → 123 lb-ft)	24 × 1.25 mm	Left-hand threads
J	230 → 0 → 170 N·mm (230 → 0 → 17.0 kg-m, 166 → 0 → 123 lb-ft)	24 × 1.25 mm	Secondary Shaft
K	8 N·m (0.8 kg-m, 6 lb-ft)	5 × 0.8 mm	Locknut